

DIGITAL ACCESSIBILITY NOTICE

The Delaware Department of Transportation (DelDOT) is committed to ensuring that its digital services, content, and documents are accessible to all users and is actively working to comply with applicable federal and state accessibility requirements. DelDOT continues to make improvements over time, with current efforts focused on programs, applications, content, and documents that are actively in use and available to the public.

Due to the nature and complexity of certain materials, including construction plans, technical drawings, historical documents, maps, and other graphic-intensive files, some documents may not currently be fully digitally accessible or compliant with current accessibility standards. In some cases, these documents are provided for historical, reference, informational, or procurement purposes only.

If you require an accessible version of a document or need assistance accessing any content, please contact DelDOT, and reasonable efforts will be made to provide the information in an accessible format upon request. DelDOT appreciates your patience and understanding as accessibility improvements continue to be implemented.

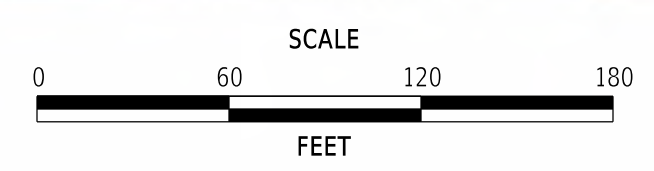


Plans are for bidding purposes only
and are not intended for construction.

PEDESTRIAN ACCESS ROUTES AND
SIDEWALK IMPROVEMENTS
NEW CASTLE COUNTY FY25-FY27

INDEX OF SHEETS	
SHEET DESCRIPTION	SHEET NO(S)
TITLE	1
INDEX OF SHEETS	2
ADDENDA AND REVISIONS	3
LEGEND	4
NOTES	5
TYPICAL SECTIONS	6
CONSTRUCTION PLANS (CP)	7
CONSTRUCTION DETAILS	8
CONSTRUCTION PHASING, MOT, AND EROSION CONTROL PLANS (CS)	9-10
ACQUISITION PLAT	11

ADDENDA / REVISIONS



PEDESTRIAN ACCESS ROUTES AND
SIDEWALK IMPROVEMENTS,
NEW CASTLE COUNTY FY25-FY27


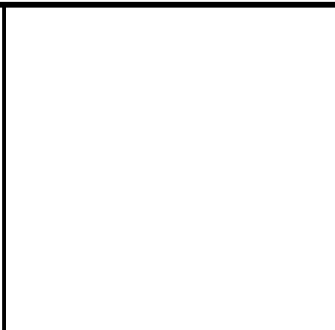
CONTRACT	BRIDGE NO.	N/A
T202501101.02	DESIGNED BY:	S. NICKEL
COUNTY	CHECKED BY:	C. YUSYPCHUK
NEW CASTLE		

WORK ORDER #8
INDEX OF SHEETS

SECTION
WM
SHEET NO.
2



ADDENDUM PREPARED BY Wallace Montgomery			
THIS SEAL APPLIES TO THE FOLLOWING SHEETS CHANGED UNDER ADDENDUM #X: XX, XX-XX, XX	DATE		

REVISION PREPARED BY Wallace Montgomery			
THIS SEAL APPLIES TO THE FOLLOWING SHEETS CHANGED UNDER REVISION #X: XX, XX-XX, XX	DATE		

Plans are for bidding purposes only and are not intended for construction.

3/3/2026 11:44:25 AM K:\PROJ\219056.000\21Highways_Cadd_WO#8 [2025].ADD1.dgn



ADDENDA / REVISIONS		SCALE NOT NOTED	PEDESTRIAN ACCESS ROUTES AND SIDEWALK IMPROVEMENTS, NEW CASTLE COUNTY FY25-FY27	CONTRACT T202501101.02	BRIDGE NO. N/A	WORK ORDER #8 ADDENDA AND REVISIONS	SECTION WM
				COUNTY NEW CASTLE	DESIGNED BY: S. NICKEL		SHEET NO. 3
					CHECKED BY: C. YUSYPCHUK		

MANMADE ROADSIDE FEATURES			
FEATURE DESCRIPTION	EXISTING	PROPOSED	ID
BARRIER - DOUBLE-FACED, PERMANENT			
BARRIER - SINGLE-FACED, PERMANENT, TEST LEVEL 4 / TEST LEVEL 5	BARRIER, TYPE "X"		
BARRIER - HIGH TENSION CABLE (HTCB)			
BARRIER - HTCB END TERMINAL			
BOLLARD - STEEL POLE			
BOLLARD - WOOD POST			
CURB, TYPE 1 AND TYPE 3			
CURB, TYPE 2	CURB, TYPE "X"		
CURB & GUTTER, TYPE 1			
CURB & GUTTER, TYPE 2			
CURB & GUTTER, TYPE 3	C&G, TYPE "X"		
CURB OPENING - SUMP / ON GRADE			
CURB/SW OPENING - ADJACENT CURB			
CURB/SW OPENING - NON-ADJACENT CURB			
FENCE - CHAINLINK OR STRANDED			
FENCE - STOCKADE OR SPLIT RAIL			
FLAG POLE	F.P.		
GUARDRAIL - STEEL BEAM, TYPE 1			
GUARDRAIL - STEEL BEAM, TYPE 2			
GUARDRAIL - STEEL BEAM, TYPE 3			
GUARDRAIL - WIRE ROPE			
GUARDRAIL - END ANCHORAGE			
GUARDRAIL - END TREATMENT, TYPE 1			
GUARDRAIL - END TREATMENT, TYPE 2			
GUARDRAIL - END TREATMENT, TYPE 3			
IMPACT ATTENUATOR			
LAMP AND POST - RESIDENTIAL	LAMP		
MAILBOX	MB		
PARKING METER AND POST	P.M.		
PAVEMENT - FLEXIBLE			
PAVEMENT - RIGID			
PILE - BRIDGE			
PILLAR OR MISCELLANEOUS POST			
TRAFFIC SIGN AND POST			
WALL - BRICK OR BLOCK			
WALL - STONE			

DRAINAGE FEATURES			
FEATURE DESCRIPTION	EXISTING	PROPOSED	ID
BIOFILTRATION SWALE			
DITCH OR STREAM (V-SHAPE / TRAPEZOIDAL)			
DIRECTIONAL STREAM FLOW ARROW			
DRAINAGE INLET	C.B. / D.I.		
DRAINAGE JUNCTION BOX	J.B.		
DRAINAGE MANHOLE			
DRAINAGE PIPE AND FLOW ARROW	SIZE/TYPE LABEL		
FLARED END SECTION			
RIPRAP - AREA FEATURE			
RIPRAP - LINEAR FEATURE			
SAFETY END STRUCTURE			
UNDERDRAIN			
UNDERDRAIN OUTLET			

UTILITY FEATURES			
FEATURE DESCRIPTION	EXISTING	PROPOSED	
COMMUNICATIONS DISTRIBUTION BOX			
COMMUNICATIONS MANHOLE			
COMMUNICATIONS TEST POINT			
COMMUNICATIONS - UNDERGROUND	COMM(A)	COMM	
ELECTRIC - UNDERGROUND	E(A)	E	
ELECTRIC MANHOLE			
ELECTRIC METER			
ELECTRIC TRANSFORMER			
GAS - UNDERGROUND	G(A)	G	
GAS MANHOLE			
GAS METER	G.M.		
GAS VALVE	G.V.		
GAS PUMP - SERVICE STATION	G.P.		
IRRIGATION - UNDERGROUND	IR(A)	IR	
ITMS - UNDERGROUND	ITMS(A)	ITMS	
LIGHTING - UNDERGROUND	LI(A)	LI	
LUMINAIRE - POLE MOUNTED			
MANHOLE - UNDETERMINED OWNER			
RAILROAD TRACKS			
SANITARY - UNDERGROUND	S(A)	S	
SANITARY SEWER MANHOLE			
SANITARY SEWER VALVE	S.V.		
SANITARY SEWER CLEANOUT OR VENT	S.C.O.		
SEPTIC DRAIN FIELD	S.D.F.		
SIGNALIZATION - UNDERGROUND	SIG(A)	SIG	
SOIL BORING LOCATION			
TELEPHONE BOOTH			
TRAFFIC - CONDUIT JUNCTION WELL	J.W.		
TRAFFIC - LIGHT POLE AND BASE			
TRAFFIC - PEDESTRIAN POLE & BASE			
TRAFFIC - SIGNAL CABINET & BASE			
TRAFFIC - SIGNAL POLE AND BASE			
UTILITY BOX			
UTILITY MARKER			
UTILITY POLE GUY WIRE ANCHOR			
UTILITY POLE			
UTILITY TEST HOLE LOCATION			
WATER - UNDERGROUND	W(A)	W	
WATER - FIRE HYDRANT	F.H.	F.H.	
WATER METER	W.M.		
WATER VALVE	W.V.	W.V.	
WELL HEAD	WELL		

PAVEMENT SECTION(S)	
OVERLAY PAVEMENT - SEE TYPICAL SECTIONS FOR MATERIALS AND DEPTHS	
RECONSTRUCTED PAVEMENT - SEE TYPICAL SECTIONS FOR MATERIALS AND DEPTHS	
DRIVEWAY AND ENTRANCE PAVEMENT - SEE NOTES FOR MATERIALS AND DEPTHS	

NATURAL ROADSIDE FEATURES		
FEATURE DESCRIPTION	EXISTING	PROPOSED
HEDGEROW OR THICKET		
MARSH BOUNDARY LINE		
TREE - CONIFEROUS		
TREE - DECIDUOUS		
TREE STUMP		
SHRUBBERY		
WETLAND BOUNDARY - DELINEATED	WL	
WOODS LINE BOUNDARY		

RIGHT-OF-WAY FEATURES		
FEATURE DESCRIPTION	EXISTING	PROPOSED
DENIAL OF ACCESS	DA	DA
EASEMENT - OTHERS	EASEMENT TYPE	
PERMANENT EASEMENT	PE	PE
PROPERTY LINE		
PROPERTY MARKER - CONCRETE	C.M.	
PROPERTY MARKER - IRON PIPE	I.P.	
RIGHT-OF-WAY BASELINE	100+00	100+00
RIGHT-OF-WAY LINE	R/W	R/W
RIGHT-OF-WAY BY PE	R/W-PE	
RIGHT-OF-WAY & DENIAL OF ACCESS	R/W-DA	R/W-DA
RIGHT-TO-ENTER		RTE
TEMPORARY CONSTRUCTION EASEMENT		TCE

SURVEY CONTROL & MONUMENTATION	
FEATURE DESCRIPTION	EXISTING
POINT OF CURVATURE OR TANGENCY	
POINT OF INTERSECTING TANGENTS	
SURVEY BENCHMARK LOCATION	B.M.
SURVEY NGS POINT LOCATION	
SURVEY TIE POINT LOCATION	T.P.
SURVEY TRAVERSE POINT	

MISCELLANEOUS FEATURES	
FEATURE DESCRIPTION	PROPOSED
BRICK PATTERNED SURFACE	
BUTT JOINT	
CLEAR ZONE	CZ
CONSTRUCTION BASELINE	100+00
LATERAL OFFSET	LO
LIMIT OF CONSTRUCTION	LOC
PAVEMENT PATCH	
PAVEMENT REMOVAL - TOPSOIL, SEED AND MULCH	
P.C.C. SIDEWALK - 4"	
P.C.C. SIDEWALK - 6" (USE 8" DEPTH FOR CHANNELIZATION ISLANDS.)	
CURB RETAINING WALL WITH RAILING	
PCC CURB, TYPE 1-8 MODIFIED WITH RAILING	

IDENTIFIERS	
FEATURE DESCRIPTION	ID
ABANDON BY CONTRACTOR	
ABANDON BY OTHERS	
ADJUST BY CONTRACTOR	
ADJUST BY OTHERS	
BEST MANAGEMENT PRACTICE	
BUS STOP PAD / TYPE	
BUS STOP WITH SHELTER PAD / TYPE	
CONCRETE SAFETY BARRIER	
CONVERT TO JUNCTION BOX	
CONVERT TO DRAINAGE MANHOLE	
DO NOT DISTURB	
ENERGY DISSIPATOR	
FILL WITH FLOWABLE FILL	
LANDSCAPE PLANTINGS	
PEDESTRIAN CONNECTION / TYPE	
PEDESTRIAN CONNECTION / TYPE WITHOUT DETECTABLE WARNING SYSTEM	
RELOCATE BY CONTRACTOR	
RELOCATE BY OTHERS	
RELOCATE BY PROPERTY OWNER	
REMOVE BY CONTRACTOR	
REMOVE BY OTHERS	
REMOVE BY TRAFFIC CONTRACTOR	
RIGHT-OF-WAY MONUMENT	

Plans are for bidding purposes only and are not intended for construction.

3/3/2026 11:44:30 AM W:\PROJECTS\19056.0002\Highways\Cadd\W0#8 [2025]LG01.dgn



ADDENDA / REVISIONS

NOT TO SCALE

PEDESTRIAN ACCESS ROUTES AND SIDEWALK IMPROVEMENTS, NEW CASTLE COUNTY FY25-FY27

CONTRACT	BRIDGE NO.	N/A
T202501101.02	DESIGNED BY:	S. NICKEL
COUNTY	CHECKED BY:	C. YUSYPCHUK
NEW CASTLE		

WORK ORDER #8 LEGEND

SECTION	WM
SHEET NO.	4

GENERAL NOTES

1. THIS PROJECT IS TO BE CONSTRUCTED IN ACCORDANCE WITH THE DELAWARE DEPARTMENT OF TRANSPORTATION "STANDARD SPECIFICATIONS", DATED JANUARY 2026 AND THE DELAWARE DEPARTMENT OF TRANSPORTATION "STANDARD CONSTRUCTION DETAILS", DATED 2026.

2. ELECTRONIC DESIGN DATA FILES THAT WILL BE MADE AVAILABLE TO THE AWARDED CONTRACTOR, INCLUDE:

(X)	NONE
()	ASCII DATA FILES WITH COORDINATES AND ELEVATIONS FOR PROPOSED POINTS AS SELECTED BY THE ENGINEER.
()	DESIGN FILE, IN .DGN FORMAT, THAT CONTAINS 3D TRIANGLES REPRESENTING THE EXISTING SURFACE.
()	DESIGN FILE, IN .DGN FILE FORMAT, THAT CONTAINS 3D FEATURE LINES FOR THE PROPOSED DESIGN. 3D FEATURE LINES ARE FOR THE PROPOSED TOP SURFACE ELEVATION ONLY.

NOTE: THE DOCUMENT ENTITLED "RELEASE FOR DELIVERY OF DOCUMENTS IN ELECTRONIC FORM TO A CONTRACTOR" MUST BE SIGNED BY ALL PARTIES PRIOR TO THE DELIVERY OF ANY ELECTRONIC PROJECT FILES.

NOTE: THERE MAY BE SOME AREAS OF THE PROJECT NOT INCLUDED IN THE ELECTRONIC DESIGN DATA FILE(S). IT IS THE CONTRACTOR'S RESPONSIBILITY TO REVIEW THE DESIGN DATA FILE AND DETERMINE THE LIMITS OF THE PROJECT INCLUDED.

3. PROJECT FILES THAT WILL BE MADE AVAILABLE TO THE CONTRACTOR, INCLUDE:

()	CROSS SECTIONS
(X)	RIGHT-OF-WAY PLANS (PLAT INCLUDED)

4. THE CONTRACTOR SHALL VERIFY ALL PROPOSED CONSTRUCTION GRADES AND COORDINATES PROVIDED BY THE ENGINEER FOR COMPLIANCE WITH THE CONTRACT REQUIREMENTS PRIOR TO FIELD LAYOUT. THE CONTRACTOR SHALL IMMEDIATELY BRING TO THE ATTENTION OF THE ENGINEER ANY DISCOVERED DISCREPANCIES OR OTHER ELEMENTS WHICH WOULD PROHIBIT THE CONTRACTOR FROM MEETING THE REQUIREMENTS OF THE CONTRACT. WHEN THE ENGINEER DOES NOT PROVIDE PROPOSED GRADES AND COORDINATE INFORMATION, THE CONTRACTOR SHALL BE RESPONSIBLE FOR COMPUTING AND ESTABLISHING THIS INFORMATION SUCH THAT IT MEETS ALL CONTRACT REQUIREMENTS. IN ALL CASES, THE CONTRACTOR SHALL ENSURE THAT ALL PROPOSED WORK INCLUDING PEDESTRIAN CONNECTIONS, ROADWAYS OR DITCHES, DRAINAGE STRUCTURES, OR OTHER ITEMS OF WORK AS DETERMINED BY THE ENGINEER, HAVE POSITIVE DRAINAGE. ALL COSTS INCIDENTAL TO ITEM 763622 - CONSTRUCTION ENGINEERING, PAR REHABILITATION.

PROJECT NOTES

SECTION 100

- ANY DAMAGE TO ITEMS NOTED TO BE RELOCATED OR RESET BY THE CONTRACTOR, AT THE DISCRETION OF THE ENGINEER, SHALL BE REPAIRED AND/OR REPLACED IN KIND AT THE CONTRACTOR'S EXPENSE.
- THE CONTRACTOR SHALL CONTACT THE DELAWARE TMC AT 302-659-4600 PRIOR TO ANY UNMANNED AERIAL VEHICLE (UAV) FLIGHTS. THE CONTRACTOR SHALL BE REQUIRED TO PROVIDE THE FOLLOWING INFORMATION: THE REGISTRATION NUMBER OF THE UAV, THE FLIGHT TIME, LOCATION OF THE FLIGHT, THE PILOT'S NAME AND THE PILOT'S CONTACT NUMBER DURING THE FLIGHT.
- A NIGHT WORK SURVEY OF ADJACENT PROPERTY OWNERS WAS CONDUCTED AND LOCAL NOISE ORDINANCES HAVE BEEN VERIFIED. NIGHT WORK IS PERMITTED AT THIS WORK ORDER LOCATION.

SECTION 200

- ONLY EXISTING FEATURES WITHIN THE LOC IDENTIFIED WITH REMOVE BY CONTRACTOR OR BY OTHER METHODS ARE TO BE REMOVED OR DISTURBED.

SECTION 700

- IN AREAS WHERE PROPOSED CURB MEETS EXISTING CURB AND THE TWO CURB TYPES ARE NOT SIMILAR, THE PROPOSED CURB SHALL BE TRANSITIONED IN 10 LINEAR FEET, UNLESS OTHERWISE DIRECTED BY THE ENGINEER. THE TRANSITIONED CURB WORK SHALL BE MEASURED AND PAID FOR UNDER THE PROPOSED CURB ITEM. SAW CUTTING OF THE EXISTING CURB SHALL BE INCIDENTAL TO THE PROPOSED CURB ITEM.
- WHERE PROPOSED CONCRETE SIDEWALK IS CONSTRUCTED TO MEET EXISTING SIDEWALK, THE EXISTING SIDEWALK SHALL BE SAWCUT AT THE TIE-IN POINT OR MEET THE NEAREST EXISTING SIDEWALK JOINT. ALL SAW CUTTING SHALL BE FULL DEPTH, UNLESS OTHERWISE NOTED ON THE PLANS OR DIRECTED BY THE ENGINEER AND SHALL BE PAID FOR UNDER ITEM 762001 - SAW CUTTING, CONCRETE, FULL DEPTH.
- ALL PAVED AREAS TO BE RECONSTRUCTED OR WIDENED SHALL BE SAWCUT AT THE POINT WHERE THE NEW PAVEMENT IS TO TIE INTO THE EXISTING PAVEMENT.

SECTION 900

- THIS PROJECT IS COVERED UNDER AN NPDES GENERAL PERMIT FOR CONSTRUCTION. UNDER THE GENERAL PERMIT, COMPLIANCE WITH DELDOT'S APPROVED SEDIMENT AND STORMWATER MANAGEMENT PLANS WILL CONSTITUTE COMPLIANCE WITH THE NPDES INDUSTRIAL PERMITTING REQUIREMENTS FOR THIS CONSTRUCTION PROJECT. A COPY OF THE NPDES GENERAL PERMIT AND NOI IS KEPT ON FILE IN EACH OF THE CONSTRUCTION OFFICES AND THE DEPARTMENT'S STORMWATER SECTION. A COPY OF THE GENERAL PERMIT OR THE NOI CAN BE OBTAINED UPON REQUEST FROM EITHER THE DEPARTMENT'S STORMWATER ENGINEER OR THE APPROPRIATE CONSTRUCTION ENGINEER.

MISCELLANEOUS

- THE CONTRACTOR SHALL NOTIFY DART FIRST STATE AT DOT_DETOURS@DELAWARE.GOV AT LEAST 14 DAYS PRIOR TO THE START OF ANY DETOURS OR CONSTRUCTION, AND DOT_DTC_PROJECTDEVELOPMENT@DELAWARE.GOV AT SUCH TIME THE FACILITY IS COMPLETED AND OPERABLE FOR TRANSIT OPERATIONS. FOR EMERGENCY DETOUR INFORMATION ONLY, PLEASE CONTACT DTC'S CHIEF SCHEDULER AT 302-576-6019.
- ALL DART SIGNS HAVE BEEN UPDATED TO A NEW DESIGN. THE DELDOT SIGN SHOP DOES NOT FABRICATE THE UPDATED SIGN OR ANY SUPPLEMENTAL PLAQUES TO ALLOW FOR ADDITIONAL ROUTE NUMBERS. ALL REQUESTS FOR FABRICATION OF THESE SIGNS MUST BE MADE THROUGH DART TRANSIT AT (302) 576-6132.
- ANY STAGING AND/OR STOCKPILE AREA(S) OUTSIDE THE PROJECT'S LIMIT OF CONSTRUCTION (LOC) THAT INDIVIDUALLY OR CUMULATIVELY ARE LARGER THAN 10,000 SQUARE FEET, MUST BE APPROVED BY DELDOT'S ARCHAEOLOGIST. CONTACT THE CONSTRUCTION AREA ENGINEER WHO WILL COORDINATE WITH DELDOT'S ARCHAEOLOGIST.

WITHIN 30 DAYS, DELDOT WILL;

- APPROVE THE USE OF THE PROPOSED STAGING AND STOCKPILE AREA(S);
 - REJECT THE REQUEST; OR
 - PERFORM AN ARCHAEOLOGICAL SURVEY TO DETERMINE WHETHER TO APPROVE OR REJECT THE REQUEST, WHICH MAY TAKE UP TO 3 MONTHS. IF AN ARCHAEOLOGICAL SURVEY IS NECESSARY, DELDOT OR A CONSULTANT ON ITS BEHALF WILL UNDERTAKE THE SURVEY.
- THE LOCATIONS OF ALL ABOVE GROUND ITEMS TO BE INSTALLED, SUCH AS SIGNS, ETC. SHALL BE VERIFIED BY THE ENGINEER PRIOR TO INSTALLATION. ALL COSTS INCIDENTAL TO ITEM 763622 - CONSTRUCTION ENGINEERING, PAR REHABILITATION.
 - ALL CONSTRUCTION DEBRIS, EXCAVATED MATERIAL, BRUSH, ROCKS, AND REFUSE INCIDENTAL TO SUCH WORK SHALL BE PLACED EITHER ON SHORE ABOVE THE INFLUENCE OF FLOOD WATERS OR ON SOME SUITABLE DUMPING GROUND.
 - THAT EFFORT SHALL BE MADE TO KEEP CONSTRUCTION DEBRIS FROM ENTERING ADJACENT WATERWAYS OR WETLANDS. ANY DEBRIS THAT ENTERS THOSE AREAS SHALL BE REMOVED IMMEDIATELY.
 - THE DISPOSAL OF TREES, BRUSH, AND OTHER DEBRIS IN ANY STREAM CORRIDOR, WETLAND, SURFACE WATER, OR DRAINAGE AREA IS PROHIBITED.
 - DELDOT ENVIRONMENTAL STUDIES SECTION MUST BE NOTIFIED IF THERE ARE ANY CHANGES TO THE PROJECT METHODS, FOOTPRINT, MATERIALS, OR DESIGNS, TO ALLOW THE DEPARTMENT TO COORDINATE WITH THE APPROPRIATE RESOURCE AGENCIES (COE, DNREC, AND SHPO), FOR APPROVAL AT DOT_ENVIRONMENTALSTUDIES@DELAWARE.GOV.

Plans are for bidding purposes only
and are not intended for construction.

ADDENDA / REVISIONS

SCALE NOT NOTED

PEDESTRIAN ACCESS ROUTES AND
SIDEWALK IMPROVEMENTS,
NEW CASTLE COUNTY FY25-FY27

CONTRACT	BRIDGE NO.	N/A
T202501101.02	DESIGNED BY:	S. NICKEL
COUNTY	CHECKED BY:	C. YUSYPCHUK
NEW CASTLE		

WORK ORDER #8
NOTES

SECTION
WM
SHEET NO.
5



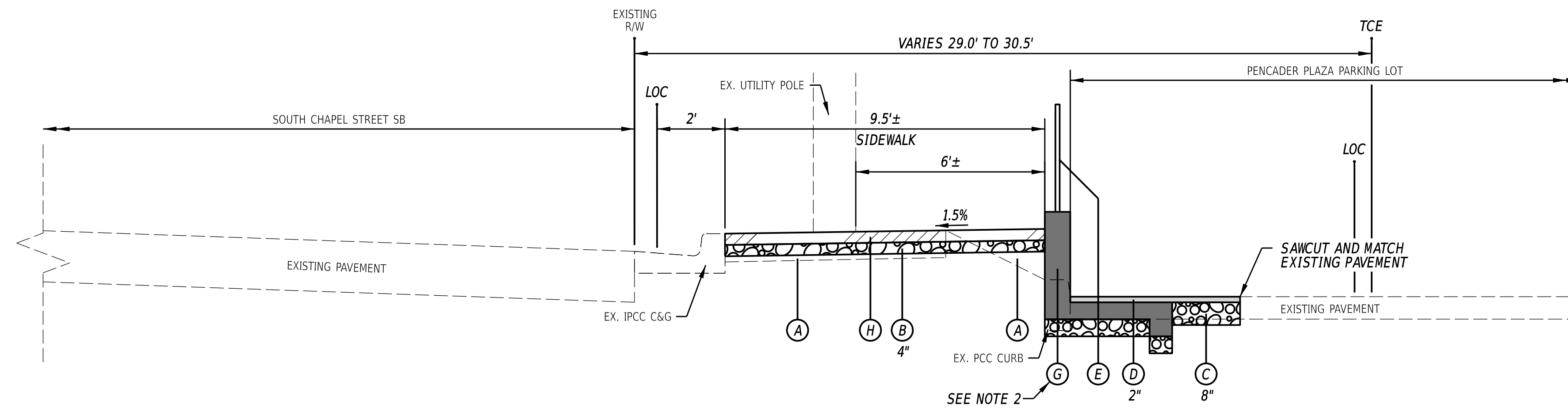
LEGEND

- (A) ITEM 209006 - BORROW, TYPE F
- (B) ITEM 301001 - GABC
- (C) ITEM 301002 - GABC PATCHING
- (D) ITEM 401005 - SUPERPAVE, TYPE C, 9.5 mm, PG 64-22 (CARBONATE STONE)
- (E) ITEM 626010 - ALUMINUM PEDESTRIAN RAILING
- (F) ITEM 701013 - PCC CURB, TYPE 1-8 (SEE NOTE 3)
- (G) ITEM 701507 - CURB RETAINING WALL, TYPE 1
- (H) ITEM 705001 - PCC SIDEWALK, 4"
- (I) ITEM 908004 - TOPSOIL, 6" DEPTH
ITEM 908016 - PERMANENT GRASS SEEDING, SUBDIVISION
ITEM 908020 - EROSION CONTROL BLANKET MULCH

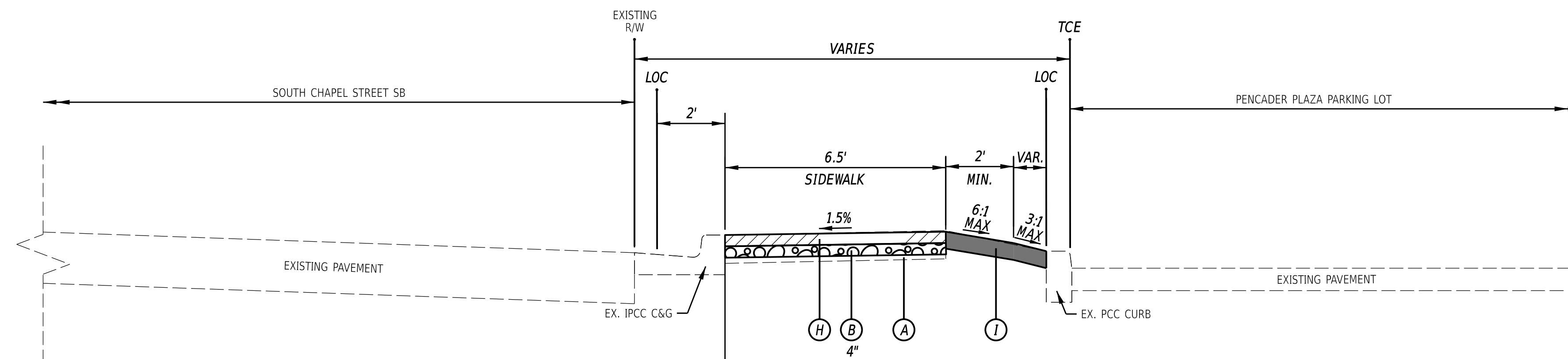
MATERIAL	BINDER GRADE	LIFT THICKNESS	
		MINIMUM	MAXIMUM
BITUMINOUS CONCRETE, TYPE 'C' (4.75 mm MIX)	ALL	0.5"	1"
BITUMINOUS CONCRETE, TYPE 'C' (9.5 mm MIX)	ALL	1.25"	2"
BITUMINOUS CONCRETE, TYPE 'C' (12.5 mm MIX)	ALL	1.5"	2"
BITUMINOUS CONCRETE, TYPE 'B' (19 mm MIX)	76-22, 70-22	2.25"	4"
BITUMINOUS CONCRETE, TYPE 'B' 19 mm MIX)	64-22	2.25"	6"
BITUMINOUS CONCRETE BASE COURSE (25 mm MIX)	64-22	3"	6"
GRADED AGGREGATE BASE COURSE	ALL	4"	8"

NOTES:

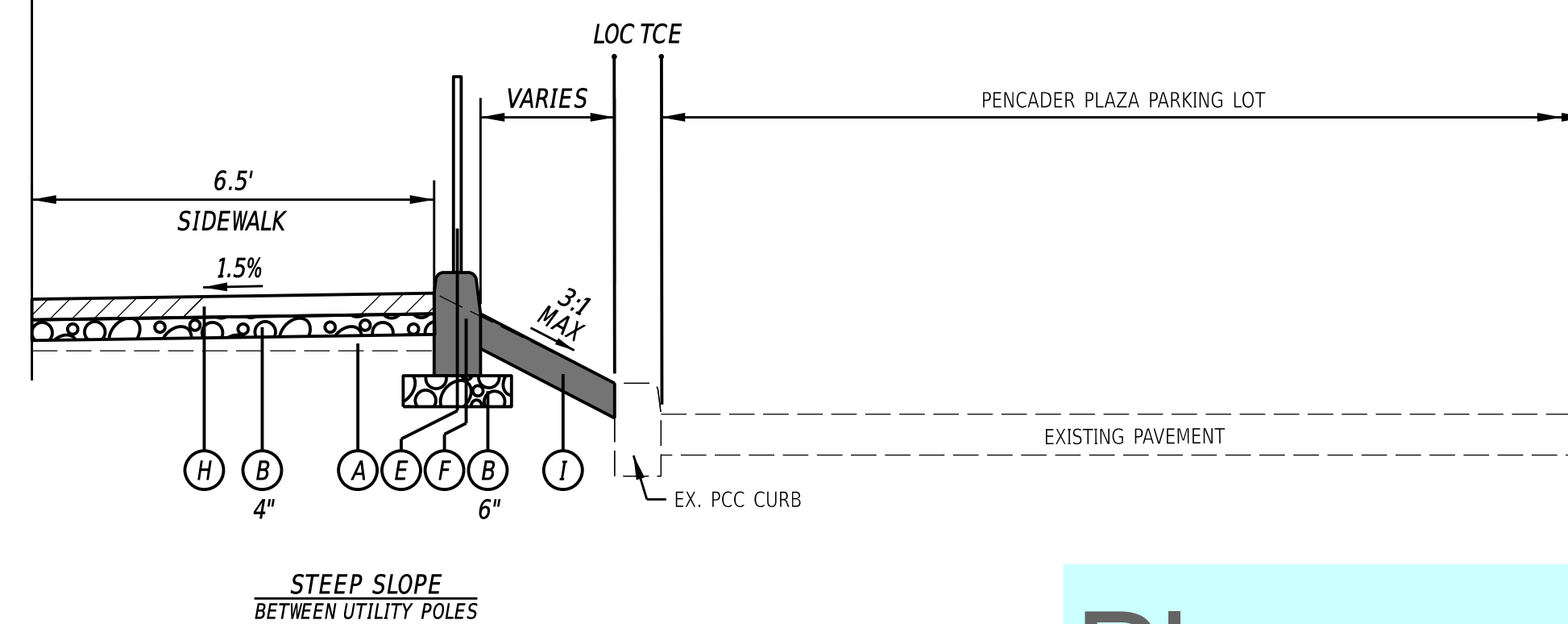
1. CONTRACTOR SHALL USE BORROW, TYPE F WHERE NEEDED.
2. SEE CONSTRUCTION DETAILS FOR WALL MEASUREMENTS AND ADDITIONAL ITEMS INCLUDED.
3. SEE CONSTRUCTION DETAILS FOR PCC CURB, TYPE 1-8 MODIFIED. TO BE PAID FOR UNDER ITEM 701013 - PCC CURB, TYPE 1-8



TYPICAL - SIDEWALK BUMPOUT AT UTILITY POLES
NOT TO SCALE



TYPICAL - SIDEWALK
NOT TO SCALE



STEEP SLOPE
BETWEEN UTILITY POLES

Plans are for bidding purposes only and are not intended for construction.

3/3/2026 11:44:42 AM W:\PROJ\219056.000\21Highways\Cadd\WO#8 [2025]\TSD1.dgn



ADDENDA / REVISIONS

NOT TO SCALE

**PEDESTRIAN ACCESS ROUTES AND
SIDEWALK IMPROVEMENTS,
NEW CASTLE COUNTY FY25-FY27**

CONTRACT	BRIDGE NO.	N/A
T202501101.02	DESIGNED BY:	S. NICKEL
COUNTY	CHECKED BY:	C. YUSYPCHUK
NEW CASTLE		

**WORK ORDER #8
TYPICAL SECTIONS**

SECTION
WM
SHEET NO.
6

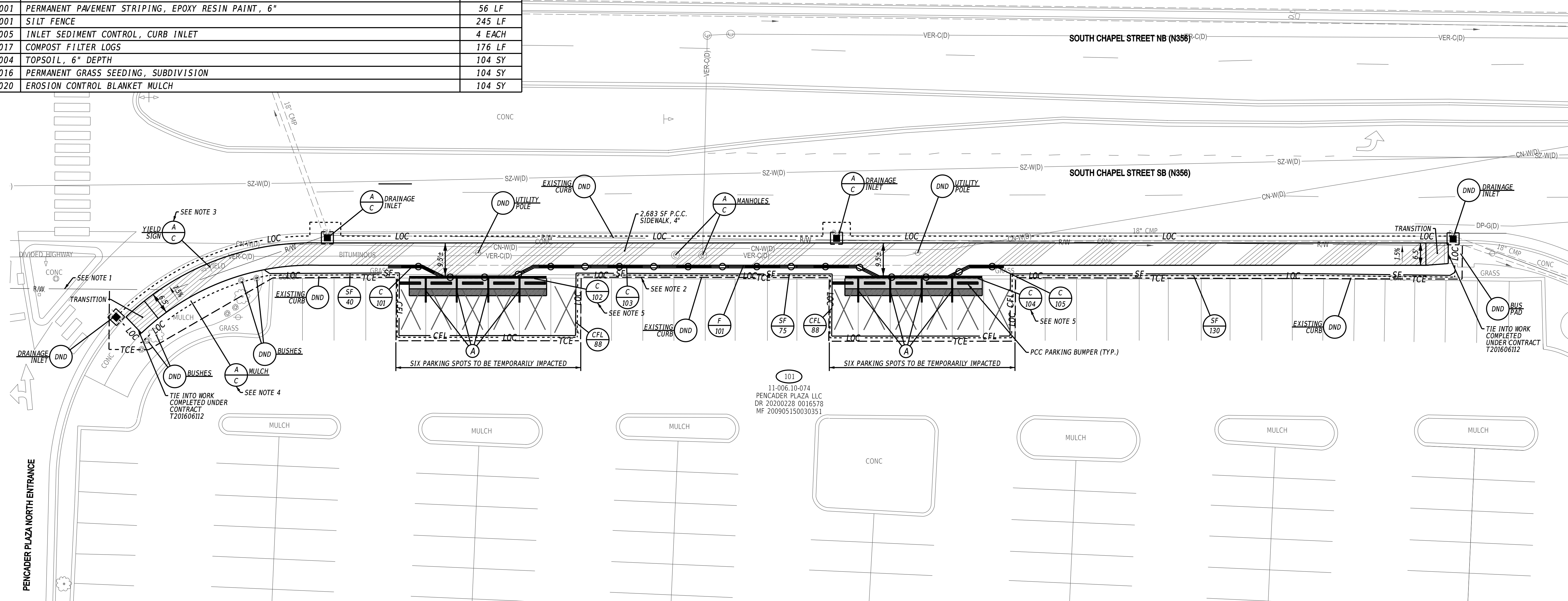
QUANTITIES		
ITEM NO.	ITEM DESCRIPTION / TYPE	QUANTITY
202000	EXCAVATION AND EMBANKMENT	86 CY
209006	BORROW, TYPE F	72 CY
211001	REMOVAL OF PORTLAND CEMENT CONCRETE PAVEMENT, CURB AND SIDEWALK	9 SY
301001	GABC	49 CY
301002	GABC, PATCHING	4 CY
401005	SUPERPAVE TYPE C, 9.5 mm, PG 64-22 (CARBONATE STONE)	6 TON
403000	BITUMINOUS CONCRETE AND/OR COLD-LAID BITUMINOUS (TRM) CONCRETE	20 TON
602130	ADJUSTING AND REPAIRING EXISTING DRAINAGE INLET	2 EACH
602132	ADJUSTING AND REPAIRING EXISTING MANHOLE	2 EACH
626010	ALUMINUM PEDESTRIAN RAILING	168 LF
701013	PCC CURB, TYPE 1-8	143 LF
701505	PCC PARKING BUMPER	10 EACH
701507	CURB RETAINING WALL	80 LF
705001	PCC SIDEWALK, 4"	2683 SF
762000	SAW CUTTING, BITUMINOUS CONCRETE	100 LF
762001	SAW CUTTING, CONCRETE, FULL DEPTH	13 LF
819002	INSTALL OR REMOVE GALVANIZED TELESCOPING SIGN POST	2 EACH
819003	INSTALL OR REMOVE TRAFFIC SIGNS	2 EACH
861001	PERMANENT PAVEMENT STRIPING, EPOXY RESIN PAINT, 6"	56 LF
905001	SILT FENCE	245 LF
905005	INLET SEDIMENT CONTROL, CURB INLET	4 EACH
907017	COMPOST FILTER LOGS	176 LF
908004	TOPSOIL, 6" DEPTH	104 SY
908016	PERMANENT GRASS SEEDING, SUBDIVISION	104 SY
908020	EROSION CONTROL BLANKET MULCH	104 SY

CURB SCHEDULE		
NO.	ITEM DESCRIPTION / TYPE	LENGTH
101	PCC CURB, TYPE 1-8 MODIFIED *	17'
102	CURB RETAINING WALL *	40'
103	PCC CURB, TYPE 1-8 MODIFIED *	109'
104	CURB RETAINING WALL *	40'
105	PCC CURB, TYPE 1-8 MODIFIED *	17'

* SEE CONSTRUCTION DETAILS FOR CURB/WALL DETAILS

FENCE SCHEDULE		
NO.	QTY.	DESCRIPTION
101	168 LF	ALUMINUM PEDESTRIAN RAILING (ITEM 626010)

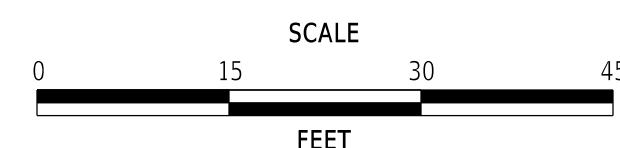
PAVEMENT MARKINGS LEGEND		
SYM	ITEM	QUANTITY
(A)	EPOXY RESIN PAINT PAVEMENT STRIPING, WHITE 6" SOLID (ITEM 861001)	56 LF



- NOTES:
- EXISTING RIGHT-OF-WAY IS SHOWN FOR INFORMATIONAL PURPOSES ONLY. RIGHT-OF-WAY AS SHOWN IS BASED ON DEEDS, MICROFILMS, AND HISTORIC PLANS AS LABELED FOR EACH PARCEL.
 - AN MOA, FOR THE FUTURE MAINTENANCE, IS TO BE RECORDED AT A LATER DATE.
 - SIGN TO BE REMOVED AND PLACED INTO NEW PCC, SIDEWALK 4". TO BE PAID FOR UNDER ITEMS 819002 - INSTALL OR REMOVE GALVANIZED TELESCOPING SIGN POST AND 819003 - INSTALL OR REMOVE TRAFFIC SIGNS TO COMPLETE ALL WORK RELATED TO THIS SIGN.
 - MULCH SHALL BE REMOVED, STOCKPILED, AND REUSED/REPLACED. SHALL BE PAID FOR UNDER ITEM 202000 - EXCAVATION AND EMBANKMENT.
 - CURB RETAINING WALL TO BE CENTERED AT EXISTING UTILITY POLE AND EXTEND 10' IN BOTH DIRECTIONS. CURB RETAINING WALL TO TRANSITION TO EXISTING CURB IN A LENGTH OF 10' AS STATED IN PROJECT NOTE 5.

Plans are for bidding purposes only and are not intended for construction.

ADDENDA / REVISIONS



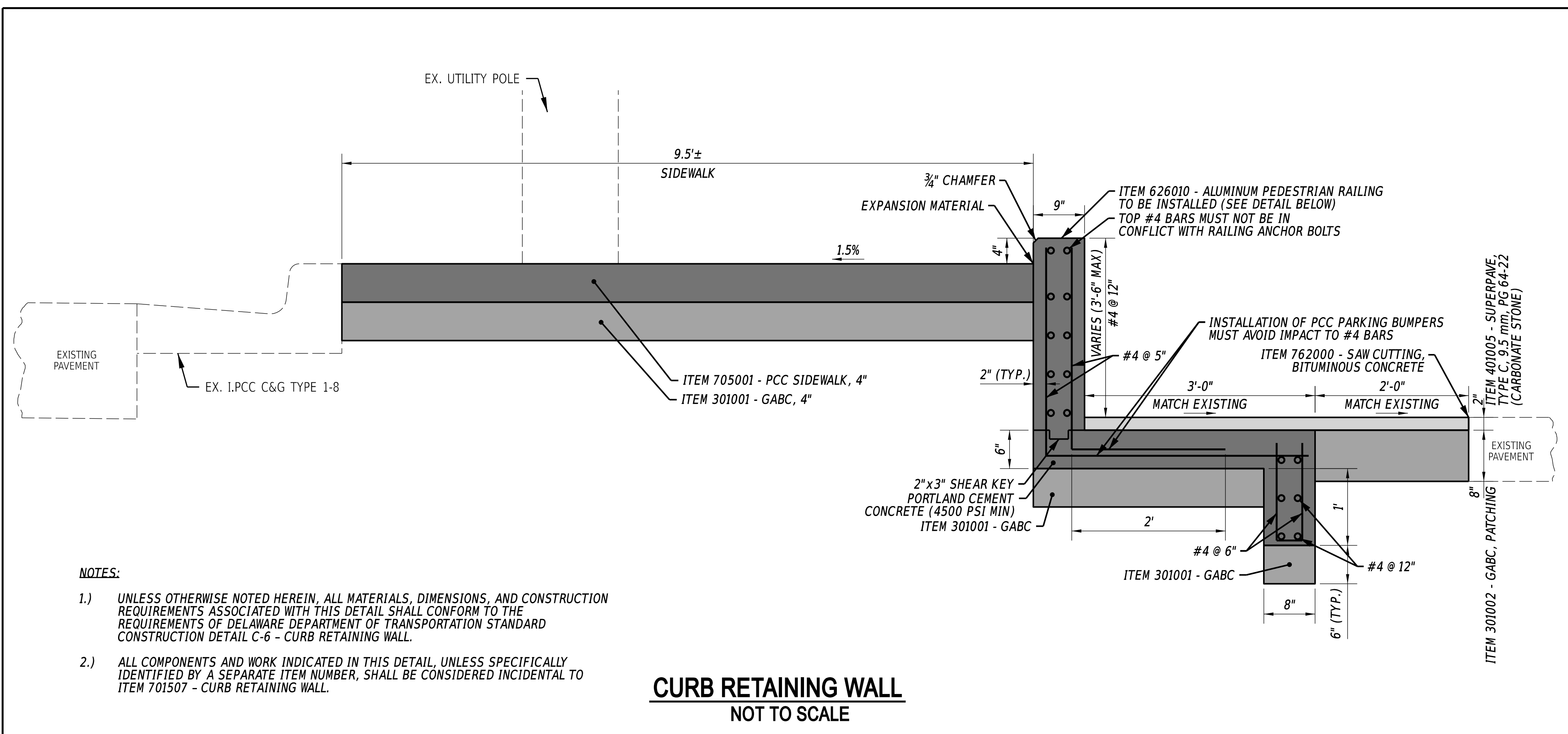
PEDESTRIAN ACCESS ROUTES AND SIDEWALK IMPROVEMENTS, NEW CASTLE COUNTY FY25-FY27

CONTRACT	T202501101.02	BRIDGE NO.	N/A
COUNTY	NEW CASTLE	DESIGNED BY:	S. NICKEL
		CHECKED BY:	C. YUSYPCHUK

WORK ORDER #8 CONSTRUCTION PLAN

CP-01
SECTION
WM
SHEET NO.
7

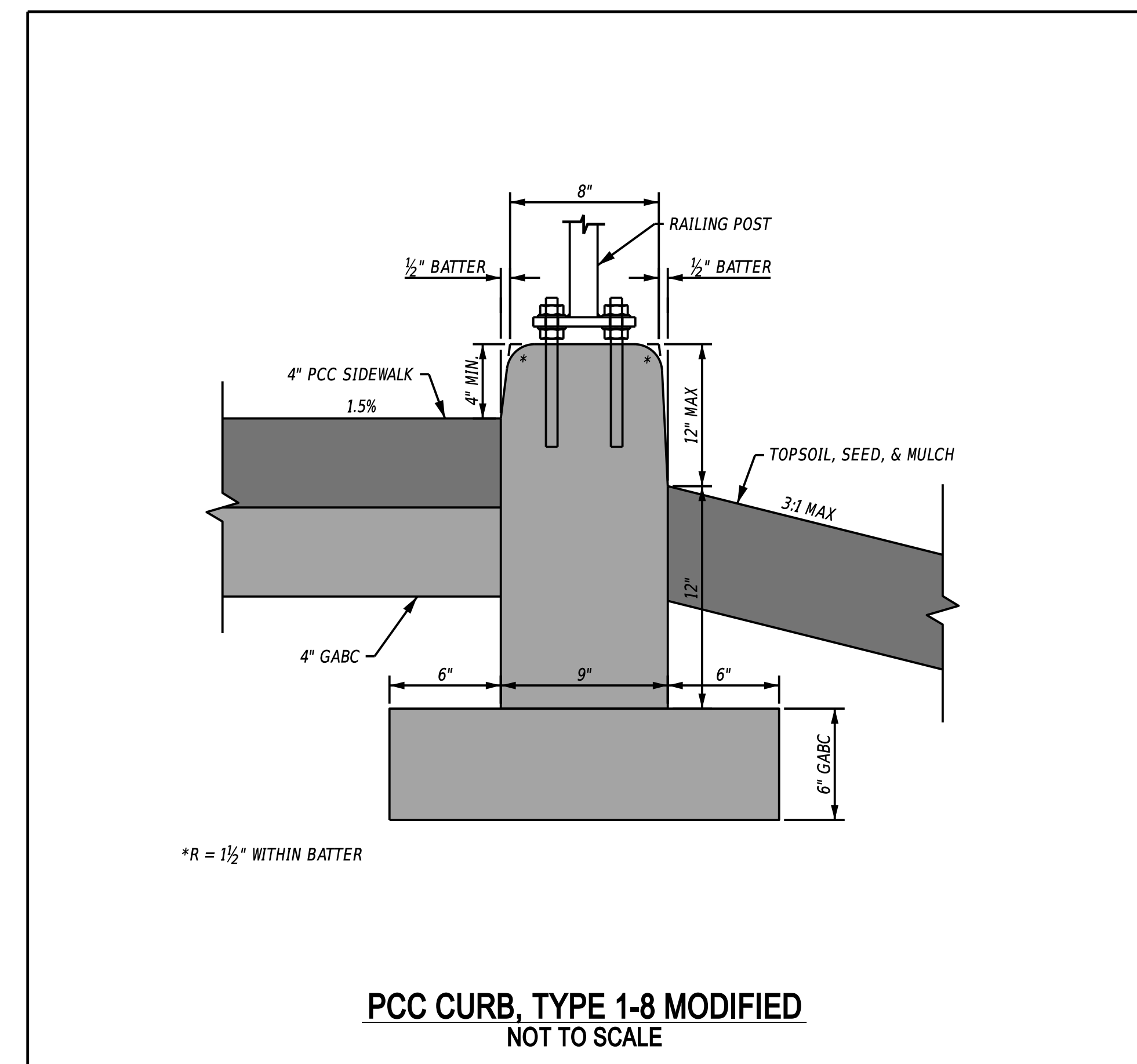
5/14/2026 3:42:20 PM W:\PROJ\219056.0002\Highways_Cadd\W0#8 [2025]CP01.dgn



NOTES:

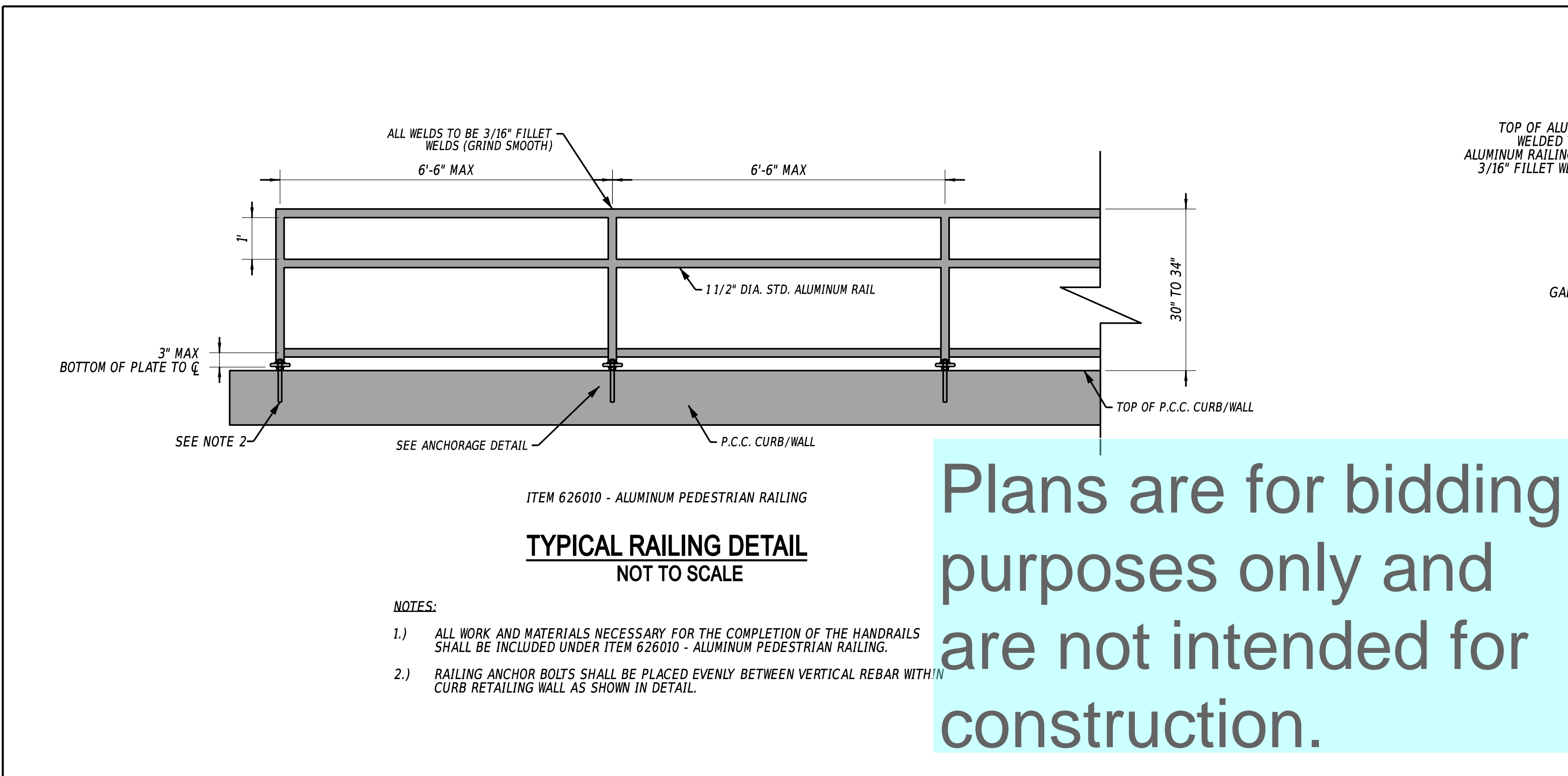
- UNLESS OTHERWISE NOTED HEREIN, ALL MATERIALS, DIMENSIONS, AND CONSTRUCTION REQUIREMENTS ASSOCIATED WITH THIS DETAIL SHALL CONFORM TO THE REQUIREMENTS OF DELAWARE DEPARTMENT OF TRANSPORTATION STANDARD CONSTRUCTION DETAIL C-6 - CURB RETAINING WALL.
- ALL COMPONENTS AND WORK INDICATED IN THIS DETAIL, UNLESS SPECIFICALLY IDENTIFIED BY A SEPARATE ITEM NUMBER, SHALL BE CONSIDERED INCIDENTAL TO ITEM 701507 - CURB RETAINING WALL.

CURB RETAINING WALL
NOT TO SCALE



*R = 1 1/2" WITHIN BATTER

PCC CURB, TYPE 1-8 MODIFIED
NOT TO SCALE

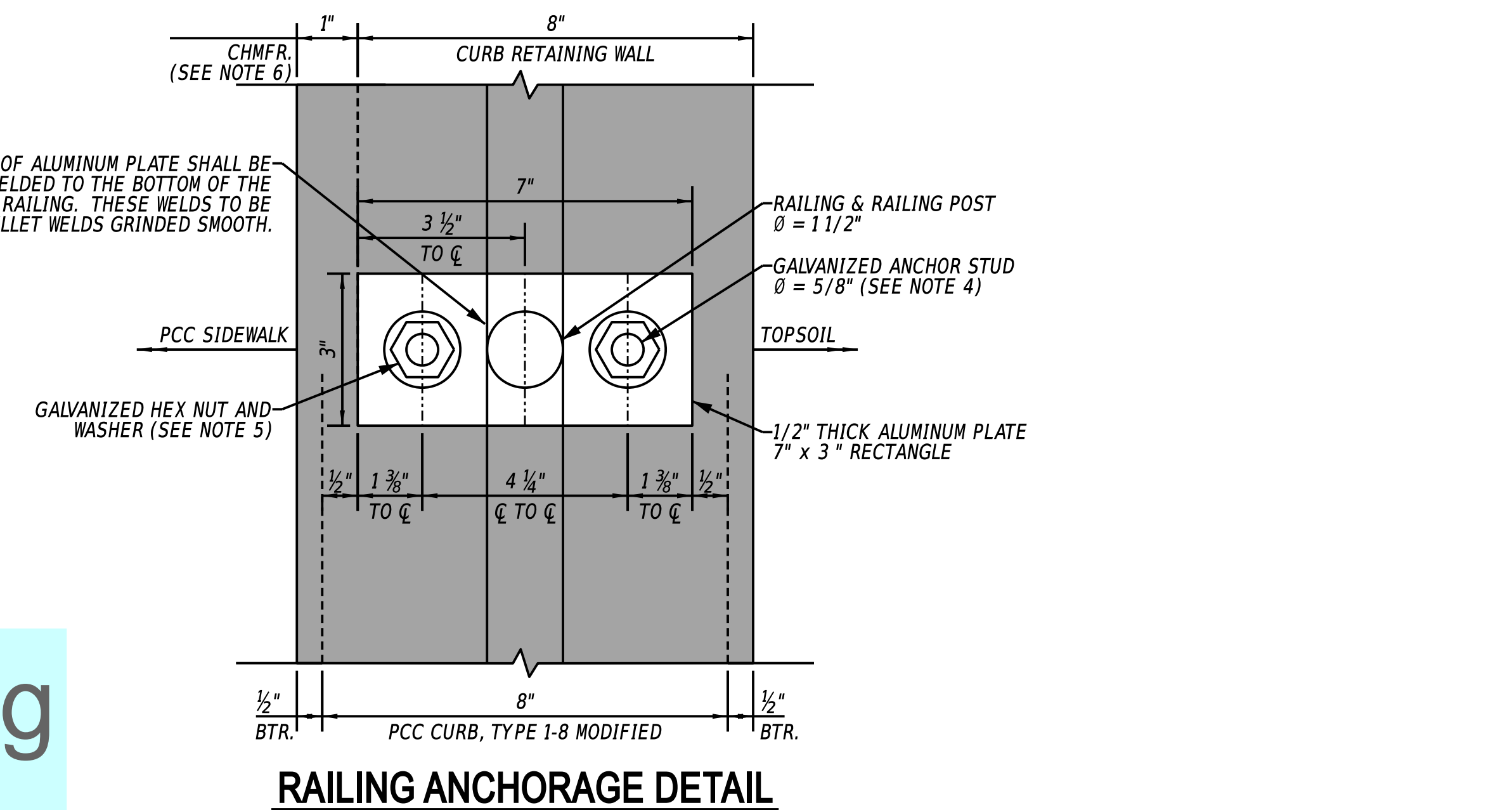


TYPICAL RAILING DETAIL
NOT TO SCALE

NOTES:

- ALL WORK AND MATERIALS NECESSARY FOR THE COMPLETION OF THE HANDRAILS SHALL BE INCLUDED UNDER ITEM 626010 - ALUMINUM PEDESTRIAN RAILING.
- RAILING ANCHOR BOLTS SHALL BE PLACED EVENLY BETWEEN VERTICAL REBAR WITHIN CURB RETAINING WALL AS SHOWN IN DETAIL.

Plans are for bidding purposes only and are not intended for construction.



NOTES:

- RAILING SHALL BE FABRICATED WITH 1 1/2" DIAMETER POSTS AND RAILS. ALL MATERIAL SHALL BE SCHEDULE 40 ALUMINUM PIPE.
- CONTRACTOR SHALL SUBMIT SHOP DRAWING FOR REVIEW AND APPROVAL. SHOP DRAWINGS SHALL DETAIL ALL CONNECTIONS, WELDS, MATERIALS, DIMENSIONS, CALL OUTS, AND FINISHES.
- MINIMUM OF 3/4" FROM TOP OF ALUMINUM PLATE TO TOP OF ANCHOR STUD.
- GALVANIZED ANCHOR STUD SHALL BE EMBEDDED A MINIMUM OF 6" INTO PROPOSED PCC CURB/WALL AND PROTRUDE 2 1/2" FROM TOP OF PROPOSED PCC CURB/WALL FOR A TOTAL OF MINIMUM 8 1/2" LONG ANCHOR STUDS.
- GALVANIZED HEX NUTS AND WASHERS TO BE USED ON TOP OF BOTTOM OF ALUMINUM PLATE TO LOCK INTO PLACE.
- WHERE SIDEWALK IS ALONG THE FRONT OF THE WALL, THE CHAMFER EDGE SHALL BE 3/4" AT THE TOP OF THE WALL WITH A 1/4" ROUND EDGE.



ADDENDA / REVISIONS

NOT TO SCALE

**PEDESTRIAN ACCESS ROUTES AND
SIDEWALK IMPROVEMENTS,
NEW CASTLE COUNTY FY25-FY27**

CONTRACT
T202501101.02
COUNTY
NEW CASTLE

BRIDGE NO.
DESIGNED BY: S. NICKEL
CHECKED BY: C. YUSYPCHUK

N/A

**WORK ORDER #8
CONSTRUCTION DETAILS**

SECTION
WM
SHEET NO.
8

CONSTRUCTION PHASING & M.O.T	
	BARRICADE, TYPE 3
	CONCRETE SAFETY BARRIER - PORTABLE
	CONSTRUCTION SAFETY FENCE / LENGTH
	CONSTRUCTION SAFETY FENCE
	CONSTRUCTION WARNING SIGN LOCATION
	CONSTRUCTION WARNING SIGN
	CRASH CUSHION ARRAY
	DRUM - TRAFFIC CONTROL
	FLAGGER LOCATION
	PHASING TRAFFIC FLOW ARROW
	TEMPORARY CONSTRUCTION
	TEMPORARY PAVEMENT MARKING ARROW
	TRUCK WITH MOUNTED ATTENUATOR
	WORK AREA - ACTIVE PHASE

EROSION & SEDIMENT CONTROL	
	COMPOST FILTER LOG
	COMPOST FILTER LOG / LENGTH
	DEWATERING BAG
	DEWATERING BASIN
	EARTH DIKE
	INLET SEDIMENT CONTROL
	PERIMETER DIKE/SWALE
	PORTABLE SEDIMENT TANK
	SANDBAG DIKE
	SANDBAG DIVERSION
	STONE CHECK DAM
	STABILIZED CONSTRUCTION ENTRANCE
	SILT FENCE / LENGTH
	SILT FENCE
	REINFORCED SILT FENCE / LENGTH
	REINFORCED SILT FENCE
	SUPER SILT FENCE / LENGTH
	SUPER SILT FENCE
	SUMP PIT
	SEDIMENT TRAP / NUMBER
	SEDIMENT TRAP
	SEDIMENT TRAP WITH INLET AS OUTLET
	SEDIMENT TRAP PIPE OUTLET
	STILLING WELL
	TEMPORARY SWALE
	TEMPORARY SLOPE DRAIN
	TURBIDITY CURTAIN / LENGTH
	TURBIDITY CURTAIN

GENERAL MOT NOTES

1. MAINTENANCE OF TRAFFIC DURING LANE CLOSURES AND LANE SHIFTS SHALL CONFORM TO TYPICAL APPLICATION TA-27 AND TA-33 OF THE DELAWARE MUTCD.
2. AMERICAN TRAFFIC SAFETY SERVICES ASSOCIATION (ATSSA) CERTIFIED TRAFFIC CONTROL SUPERVISOR REQUIREMENT FOR THIS PROJECT.

(X)	THE CONTRACTOR SHALL NOT BE REQUIRED TO HAVE AN ATSSA SUPERVISOR ASSIGNED TO THIS PROJECT.
()	THE CONTRACTOR SHALL HAVE AN ATSSA SUPERVISOR ASSIGNED TO THIS PROJECT AND THAT PERSON'S SOLE RESPONSIBILITY SHALL BE THE MANAGEMENT AND SUPERVISION OF THE PROJECT'S TEMPORARY TRAFFIC CONTROL ACTIVITIES. THIS PERSON SHALL NOT HAVE ANY OTHER ROLE ON THE PROJECT. RESPONSIBILITIES AND REQUIREMENTS OF THE ATSSA SUPERVISOR ARE DEFINED IN SECTION 812 OF THE STANDARD SPECIFICATIONS. PAYMENT FOR ATSSA SUPERVISOR IS INCIDENTAL TO ITEM 801000.

3. THE USE OF MILLINGS AND GRADED AGGREGATE BASE COURSE (GABC) IN THE TRAVEL WAY, TEMPORARY TRAVEL WAY, HIGH VOLUME ENTRANCES AND ACCESS RAMP FOR THE PURPOSE OF PROVIDING A TEMPORARY ROADWAY SURFACE, POTHOLE REPAIR, TAPERED EDGE FOR UTILITIES, BUTT JOINTS, AND LONGITUDINAL DROP-OFFS (MILLING AND PAVING OPERATIONS) IS PROHIBITED UNLESS IT IS OTHERWISE DESIGNATED TO BE USED IN THE CONTRACT PLANS. USE COLD PATCH, BITUMINOUS CONCRETE, BITUMINOUS CONCRETE WEDGE, OR TAPER MILL, AS NOTED IN THE CONTRACT DOCUMENTS OR APPROVED BY THE ENGINEER. PAYMENT FOR COLD PATCH, BITUMINOUS CONCRETE OR BITUMINOUS CONCRETE WEDGE SHALL BE PAID AS NOTED IN THE CONTRACT DOCUMENTS. TAPER MILL BITUMINOUS CONCRETE SHALL BE PAID UNDER THE BITUMINOUS CONCRETE MILLING ITEM.

MILLINGS OR GABC SHALL BE USED AT THE FOLLOWING LOCATIONS WHERE ACCESS TO A BUSINESS, RESIDENCE, OR EDGE DROP OFF NEEDS TO BE MAINTAINED UNLESS OTHERWISE NOTED IN THE PLANS OR DIRECTED BY THE ENGINEER TO USE BITUMINOUS CONCRETE OR COLD PATCH. ALL MILLINGS AND GABC WILL BE ROLLED AND COMPACTED TO HELP PREVENT THE MATERIAL FROM UNRAVELLING:

- A. DRIVEWAYS
- B. ENTRANCES
- C. LOW VOLUME ACCESS RAMPS (IDENTIFIED IN THE CONTRACT DOCUMENTS)
- D. EDGE DROP-OFFS ADJACENT TO LIVE ROADWAY (LANES AND SHOULDER) AND THE PROPOSED ROAD CONSTRUCTION
- E. EDGE OF ROADWAY DROP-OFF

GRADING AND MAINTAINING BASE COURSE THAT IS BEING USED FOR ROADWAY WEDGE/FILLET BETWEEN TRAVEL LANES AND PAVEMENT BOX, EDGE OF TRAVELWAY, DRIVEWAY OR ENTRANCE ACCESS SHALL BE INCIDENTAL TO ITEM NO. 801000 - MAINTENANCE OF TRAFFIC. THE BASE COURSE MATERIAL SHALL BE PLACED AT NO GREATER THAN THE SLOPE SPECIFIED IN THE STANDARD CONSTRUCTION DETAILS AND SHALL BE COMPACTED. EXCESS BASE COURSE MATERIAL SHALL BE PUSHED AHEAD AND USED IN THE NEXT SEGMENT AND SHALL BE INCIDENTAL TO THE PARTICULAR BASE COURSE PAY ITEM. NO SEPARATE PAYMENT SHALL BE MADE FOR MILLINGS OR GABC TEMPORARY ROADWAY MATERIAL (TRM) USED TO PROTECT EDGE DROP-OFFS, UNLESS THE MATERIAL IS EVENTUALLY UTILIZED AS PART OF A PERMANENT ROADWAY AT WHICH TIME THE MATERIAL WOULD BE PAID FOR UNDER THE RESPECTIVE CONTRACT MATERIAL ITEM.

4. THE CONTRACTOR SHALL PROVIDE ONE TRAFFIC OFFICER FOR ANY OPERATION WHERE AN EXISTING SIGNALIZED INTERSECTION IS PLACED IN FLASH MODE. THE TRAFFIC OFFICER IS THE ONLY INDIVIDUAL THAT CAN PLACE A TRAFFIC SIGNAL IN FLASH MODE, AND THE TRAFFIC OFFICER SHALL STAY ON LOCATION UNTIL THE SIGNAL IS PLACED BACK IN STOP-AND-GO OPERATION IN ACCORDANCE WITH DELDOT'S TEMPORARY TRAFFIC CONTROL WITHIN INTERSECTIONS MEMORANDUM (WWW.MUTCD.DELDOT.GOV).
5. MESSAGE BOARDS SHALL BE PLACED 10 DAYS IN ADVANCE OF THE WORK AND TRAFFIC PATTERN CHANGES AND REMAIN IN PLACE FOR 5 DAYS AFTER THE START OF THE WORK. LOCATIONS OF MESSAGE BOARDS AND MESSAGES DISPLAYED SHALL BE REVIEWED AND APPROVED BY THE DISTRICT SAFETY OFFICER.

ALLOWABLE LANE CLOSURE HOURS S. CHAPEL STREET*																								
	12:00 AM	1:00 AM	2:00 AM	3:00 AM	4:00 AM	5:00 AM	6:00 AM	7:00 AM	8:00 AM	9:00 AM	10:00 AM	11:00 AM	12:00 PM	1:00 PM	2:00 PM	3:00 PM	4:00 PM	5:00 PM	6:00 PM	7:00 PM	8:00 PM	9:00 PM	10:00 PM	11:00 PM
SUNDAY	X	X	X	X	X	X	X	X	X	X	X	X	X	X	X	X	X	X	X	X	X	X	X	X
MONDAY	X	X	X	X	X	X	X	X	X	X	X	X	X	X	X	X	X	X	X	X	X	X	X	X
TUESDAY	X	X	X	X	X	X	X	X	X	X	X	X	X	X	X	X	X	X	X	X	X	X	X	X
WEDNESDAY	X	X	X	X	X	X	X	X	X	X	X	X	X	X	X	X	X	X	X	X	X	X	X	X
THURSDAY	X	X	X	X	X	X	X	X	X	X	X	X	X	X	X	X	X	X	X	X	X	X	X	X
FRIDAY	X	X	X	X	X	X	X	X	X	X	X	X	X	X	X	X	X	X	X	X	X	X	X	X
SATURDAY	X	X	X	X	X	X	X	X	X	X	X	X	X	X	X	X	X	X	X	X	X	X	X	X

LANE CLOSURE ALL LANES OPEN

* CONTRACTOR SHALL COORDINATE THE LANE CLOSURE RESTRICTION SCHEDULE WITH THE ADJACENT T201609002 (I-95/SR 896 INTERCHANGE) PROJECT TO CONFIRM THERE ARE NO CONFLICTING LANE CLOSURES PLANNED DURING THE SAME TIME.

GENERAL PEDESTRIAN MOT NOTES

1. DURING WORKING HOURS, THE CONTRACTOR SHALL PROVIDE FLAGGING OPERATIONS FOR PEDESTRIAN MAINTENANCE OF TRAFFIC (MOT). COMPENSATION FOR THIS WORK SHALL BE MADE UNDER ITEM 811001 - FLAGGER, NEW CASTLE COUNTY.

DURING NON-WORKING HOURS, THE CONTRACTOR SHALL MAINTAIN PEDESTRIAN MOT IN ACCORDANCE WITH DELDOT STANDARD CONSTRUCTION DETAIL M-13 - TEMPORARY PEDESTRIAN PATHWAY. ALL WORK ASSOCIATED WITH NON-WORKING HOUR PEDESTRIAN MOT SHALL BE CONSIDERED INCIDENTAL TO THE RESPECTIVE CONTRACT PAY ITEM.

GENERAL EROSION AND SEDIMENT CONTROL (E&S) NOTES

1. THE STORMWATER POLLUTION PREVENTION PLAN (SWPPP) HAS BEEN APPROVED BY DELDOT'S STORMWATER ENGINEER UNDER DELDOT'S DELEGATED AUTHORITY. PLAN APPROVAL IS VALID FOR 1 YEAR FOR A STANDARD PLAN. ANY DEVIATIONS TO THE SWPPP NEED APPROVAL FROM THE ENGINEER.

	3/11/2025
DELDOT STORMWATER ENGINEER	DATE
I CERTIFY THAT TO THE BEST OF MY KNOWLEDGE THESE PLANS MEET THE REQUIREMENTS OF THE DELAWARE SEDIMENT AND STORMWATER REGULATIONS.	

AMOUNT OF DISTURBED AREA FOR THE PROJECT	0.113 AC
ADDED IMPERVIOUS FOR THE PROJECT	233 SF
HUC-10 WATERSHED	CHRISTINA RIVER

2. ASSIGN A RESPONSIBLE PERSON TO BE ON SITE DURING ALL EARTH DISTURBING ACTIVITIES AND BE AN ACTIVE DNREC BLUE CARD HOLDER AS DEFINED IN SECTION 6.2 OF THE DELAWARE SEDIMENT AND STORMWATER REGULATIONS (DSSR). BE FAMILIAR WITH AND COMPLY WITH ALL ASPECTS OF THE NPDES CONSTRUCTION GENERAL PERMIT.
3. FILE AS A CO-PERMITTEE IN ACCORDANCE WITH SECTION 901 OF THE STANDARD SPECIFICATIONS. POSTING AND MAINTENANCE OF THE NOI PERMIT COVERAGE IS INCIDENTAL TO THE CONTRACT.
4. REVISIONS TO THE SWPPP OR ENVIRONMENTAL COMPLIANCE PLAN SHEET(S) SHALL BE APPROVED PRIOR TO INITIATION IN THE FIELD. THE ENGINEER IS RESPONSIBLE FOR APPROVING ALL REDLINES AND REVISIONS TO THE SWPPP.
5. IMPLEMENTING AND MAINTAINING POLLUTION PREVENTION DEVICES AND PRACTICES IS REQUIRED UNDER THE DELAWARE CONSTRUCTION GENERAL PERMIT AND THE DSSR AND ARE INCIDENTAL TO THE CONTRACT.
6. A SOIL STOCKPILE, AS DESCRIBED IN DELDOT STANDARD SPECIFICATIONS AND DEFINED IN THE DELAWARE EROSION & SEDIMENT CONTROL HANDBOOK, IS ANY LOCATION WITHIN THE LIMITS OF CONSTRUCTION WHERE A TEMPORARY DEPOSIT OF EXCAVATED SOIL IS BEING RESERVED FOR FUTURE USE. A SOIL STOCKPILE SHALL BE LOCATED A MINIMUM OF 50 FEET FROM A STORM DRAIN INLET, OPEN CHANNEL, WETLAND, OR WATERBODY. A REQUEST MAY BE MADE TO THE ENGINEER TO PERMIT LOCATING A SOIL STOCKPILE LESS THAN 50 FEET FROM A STORM DRAIN INLET OR OPEN CHANNEL. UPON APPROVAL, IF ANY PART OF A SOIL STOCKPILE IS LESS THAN 50 FEET FROM A STORM DRAIN INLET OR OPEN CHANNEL, INSTALL A SUPER SILT FENCE PERIMETER TO PROTECT THE SOIL STOCKPILE. THE SUPER SILT FENCE MUST BE CONSTRUCTED IN ACCORDANCE WITH 905.3.B.3 OF THE STANDARD SPECIFICATIONS. THE COST FOR INSTALLATION AND MAINTENANCE OF THE STOCKPILE SUPER SILT FENCE IS INCIDENTAL TO THE CONTRACT.
7. PROTECT AGAINST SEDIMENT OR DEBRIS LADEN RUNOFF FROM LEAVING THE SITE. CHECK PERIMETER CONTROLS DAILY AND ADJUST OR REPAIR TO FULLY CONTAIN AND CONTROL SEDIMENT FROM LEAVING THE SITE. REMOVE ACCUMULATED SEDIMENT BEFORE IT HAS REACHED HALF OF THE EFFECTIVE CAPACITY OF THE CONTROL. ADJUST OR ALTER MEASURES IN TIMES OF ADVERSE WEATHER CONDITIONS, OR AS DIRECTED BY THE ENGINEER.
8. ANY SEDIMENT LADEN DISCHARGE LEAVING THE LIMIT OF CONSTRUCTION SHALL IMMEDIATELY BE ADDRESSED THROUGH BEST AVAILABLE TECHNOLOGIES TO CONTROL ANY FURTHER SEDIMENT LADEN DISCHARGE. REMEDIATION MAY INCLUDE STANDARD E&S PRACTICES OR OTHER METHODS AS APPROVED BY THE ENGINEER.
9. ALL TEMPORARY CONCENTRATED FLOW AREAS INCLUDING CHANNEL SIDE SLOPES SHALL HAVE EROSION CONTROL BLANKET MULCH AS DIRECTED BY THE ENGINEER. INSTALL WITHIN SEVEN CALENDAR DAYS UPON CONSTRUCTION INITIATION. A TEMPORARY CONCENTRATED FLOW AREA MAY INCLUDE DITCHES, SWALES, BERMS, CONCENTRATED RUNOFF AREAS, ETC.
10. FOR ANY PERMANENT STORMWATER MANAGEMENT FACILITY, FOLLOW THAT FACILITY'S SEQUENCE OF CONSTRUCTION AS NOTED ON THE STORMWATER MANAGEMENT SHEETS.

PER SIDEWALK, TRAIL, OR OTHER LINEAR IMPERVIOUS SURFACES STANDARD PLAN APPROVAL, NO MORE THAN 1.0 ACRE MAY BE DISTURBED AT ANY TIME. FURTHER DISTURBANCE MAY NOT PROCEED UNTIL TEMPORARY OR PERMANENT STABILIZATION OF THE PREVIOUSLY DISTURBED AREA IS COMPLETED TO THE SATISFACTION OF AND AS APPROVED BY THE ENGINEER.

12. MAINTAIN POSITIVE DRAINAGE IN EXISTING AND PROPOSED DRAINAGE SYSTEMS BY EXECUTING CONSTRUCTION, CLEANING EXISTING DRAINAGE SYSTEMS, AND PROPERLY DISPOSING OF SEDIMENT THROUGHOUT THE DURATION OF THE PROJECT.

GENERAL E&S SEQUENCE NOTES (FOR ALL PHASES)

1. POST NOI PERMIT COVERAGE SO THAT IT IS VISIBLE IN CLOSE PROXIMITY TO THE CONSTRUCTION SITE AS DIRECTED BY THE ENGINEER. THE NOTICE MUST BE IN ACCORDANCE WITH DELDOT GUIDANCE.
2. INSTALL ALL PERIMETER E&S ITEMS AND SENSITIVE AREA PROTECTIONS PRIOR TO ANY LAND DISTURBING ACTIVITIES. THE ONLY LAND DISTURBANCE ALLOWABLE IS WHAT IS NECESSARY TO INSTALL THE PERIMETER E&S ITEMS.
3. ESTABLISH CONSTRUCTION STAGING AREAS AND INSTALL E&S CONTROLS.
4. ONCE PERIMETER E&S CONTROLS ARE INSTALLED, THEY SHALL BE INSPECTED AND APPROVED BY THE ENGINEER BEFORE ANY OTHER LAND DISTURBING ACTIVITIES CAN BEGIN.
5. INTERIOR EROSION AND SEDIMENT CONTROL ITEMS SHALL BE PLACED AS PER PLAN.
6. NOTIFY THE ENGINEER 48 HOURS BEFORE CONSTRUCTION OF ALL STORMWATER MANAGEMENT FACILITY COMPONENTS IN ACCORDANCE WITH THE STORMWATER MANAGEMENT SHEET FACILITY CONSTRUCTION SEQUENCE.
8. PRIOR TO COMMENCING A NEW PHASE OF CONSTRUCTION, APPROVAL IS REQUIRED FROM THE ENGINEER THAT THE AREAS WITHIN THE PREVIOUS PHASE HAVE BEEN SUFFICIENTLY STABILIZED.
9. COMPLETE PERMANENT STABILIZATION WITHIN SEVEN (7) CALENDAR DAYS UPON REACHING FINAL GRADE.
10. DO NOT REMOVE E&S DEVICES UNLESS DIRECTED BY THE ENGINEER.

Plans are for bidding purposes only and are not intended for construction.

ADDENDA / REVISIONS

SCALE NOT NOTED

PEDESTRIAN ACCESS ROUTES AND
SIDEWALK IMPROVEMENTS,
NEW CASTLE COUNTY FY25-FY27

CONTRACT	BRIDGE NO.	N/A
T202501101.02	DESIGNED BY:	S. NICKEL
COUNTY	CHECKED BY:	C. YUSYPCHUK
NEW CASTLE		

WORK ORDER #8
CONSTRUCTION PHASING,
M.O.T., AND EROSION
CONTROL PLAN

SECTION
WM
SHEET NO.
9

PORTABLE CHANGEABLE MESSAGE SIGNS

PRIOR TO CONSTRUCTION
(10 DAYS PRIOR TO BEGINNING OF CONSTRUCTION)

PCMS-1

ROAD WORK TO BEGIN

STARTING XX/XX/XX

DURING CONSTRUCTION
(DISPLAY FOR 5 DAYS AFTER START OF CONSTRUCTION)

PCMS-1

ROAD WORK AHEAD

EXPECT DELAYS

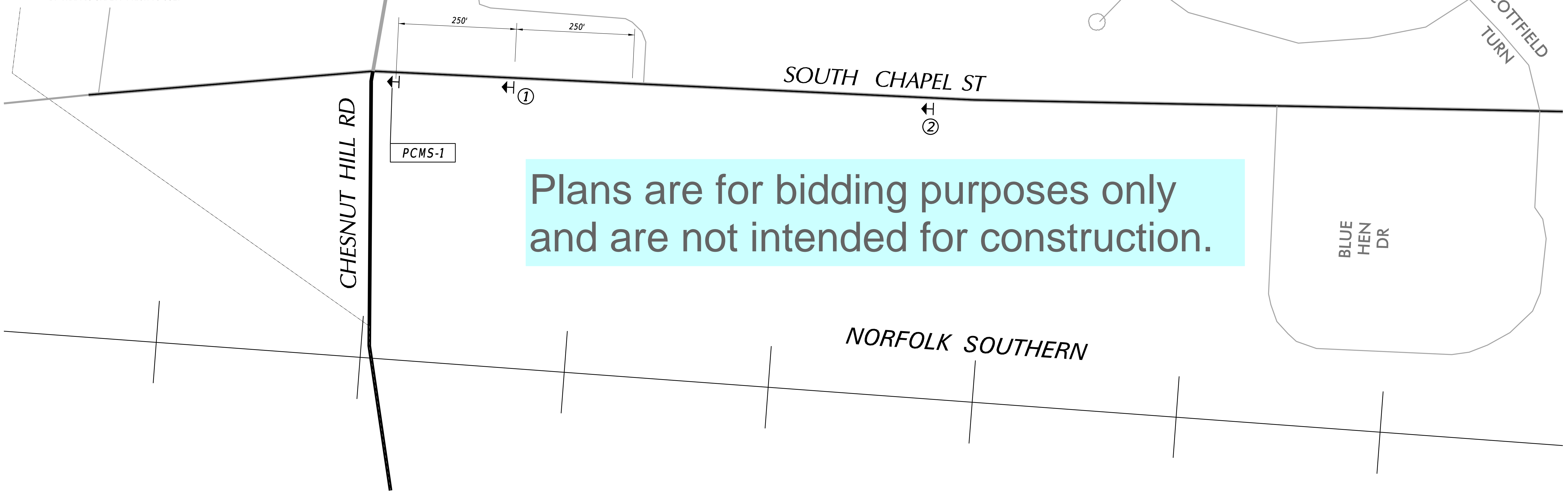
WARNING SIGN LEGEND

ROAD WORK AHEAD
W20-1
①

END ROAD WORK
G20-2A
②

NOTES:

1. FINAL LOCATION OF ALL PERMANENT SIGNS SHALL BE COORDINATED WITH THE ENGINEER.
2. ALL WARNING SIGNS SHOWN ON THIS SHEET ARE TO BE DISPLAYED THROUGHOUT THE DURATION OF THE CONTRACT AND ARE TO BE PAID FOR UNDER ITEM 810001 - TEMPORARY WARNING SIGNS AND PLAQUES.
3. ANY EXISTING SIGNS THAT CONFLICT WITH CONSTRUCTION WARNING SIGNS SHALL BE COVERED AS NEEDED AS DIRECTED BY THE ENGINEER.
4. PLACE CHANGEABLE MESSAGE SIGNS ALONG SOUTH CHAPEL STREET TEN (10) CALENDAR DAYS IN ADVANCE OF THE START OF CONSTRUCTION AND FOR FIVE (5) DAYS AFTER THE START OF CONSTRUCTION. PCMS MESSAGES SHALL BE APPROVED BY TRAFFIC SAFETY PRIOR TO USE.



3/3/2026 11:45:06 AM
M:\PROJ\219056.000\21Highways\Cadd\W0#8 (2025)\CSAD\01.dgn



ADDENDA / REVISIONS

SCALE NOT NOTED

PEDESTRIAN ACCESS ROUTES AND
SIDEWALK IMPROVEMENTS,
NEW CASTLE COUNTY FY25-FY27


CONTRACT	BRIDGE NO.	N/A
T202501101.02	DESIGNED BY:	S. NICKEL
COUNTY	CHECKED BY:	C. YUSYPCHUK
NEW CASTLE		

WORK ORDER #8
CONSTRUCTION PHASING,
M.O.T., AND EROSION
CONTROL PLAN

SECTION
WM
SHEET NO.
10

KENMAR DRIVE
(N130430)

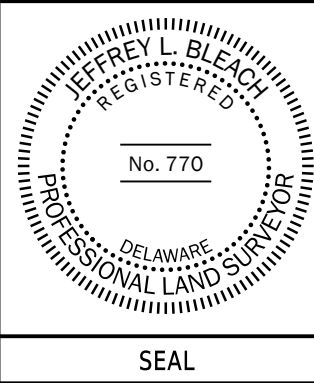
PREPARED BY
Wallace Montgomery



Jeffrey L. Bleed

6/4/2025

DATE



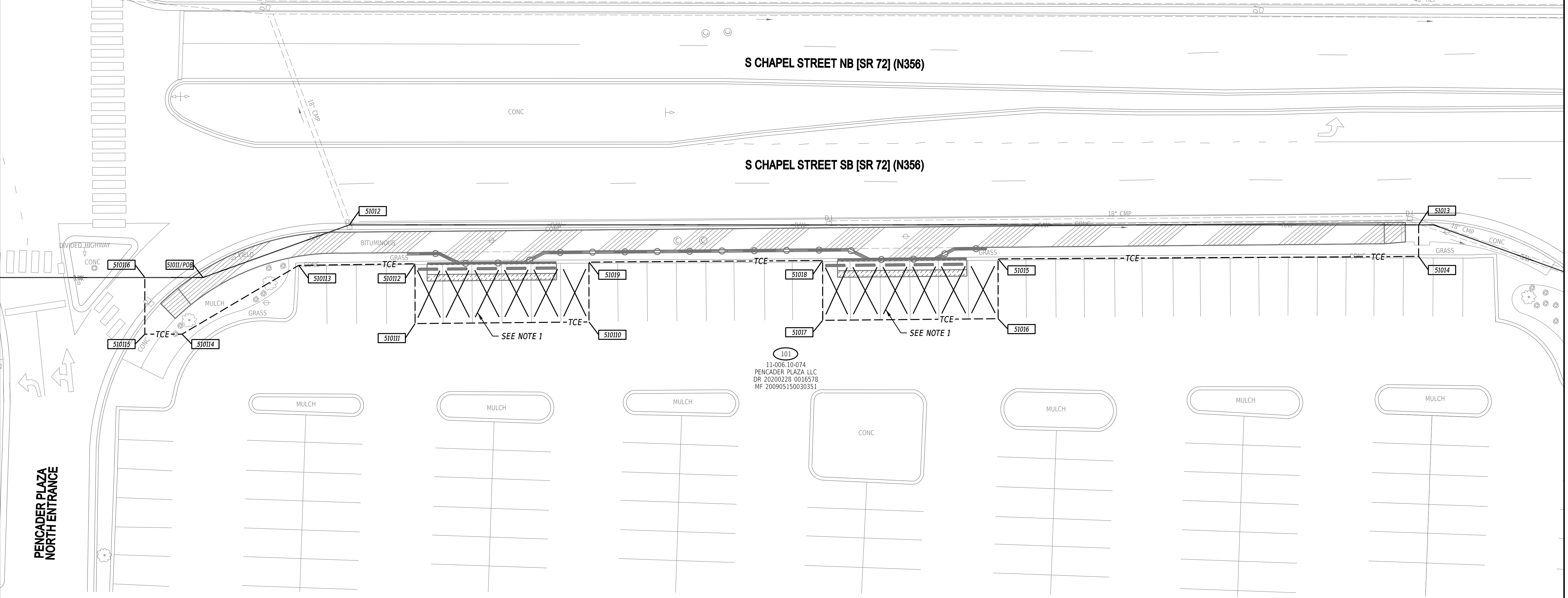
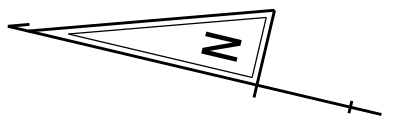
SEAL

THIS SEAL APPLIES TO ALL SHEETS BEARING THE "WM" SECTION DESIGNATION.

Note:
No title search nor metes and bounds survey were performed for this project as per instructed by DeIDOT. Right of ways and property lines shown are for picture purpose only. The surveyor of record is only signing to the accuracy of the TCE area.

ASSESSMENT NUMBER		OWNERSHIP OF RECORD				TYPE OF ACQUISITION		TITLE SOURCE	PARCEL AREA (ACRES)	PAGE NUMBER
11-006.10-074		(101) PENCADER PLAZA LLC				TCE		DR 20200228 0016578	A - 16.550	11
PT. NO.	ALIGN. NO.	STATION	OFFSET*	NORTH	EAST	BEARING	DISTANCE	CHORD BEARING	CHORD LENGTH	RADIUS**
51011						S 33°02'52" E	48.070			
51012						S 13°15'44" E	330.570			
51013						S 76°44'16" W	9.750			
51014						N 13°35'34" W	130.000			
51015						S 76°44'02" W	18.500			
51016						N 13°47'25" W	54.250			
51017						N 76°44'02" E	18.500			
51018						N 13°39'31" W	72.250			
51019						S 76°44'02" W	18.500			
510110						N 13°47'42" W	53.750			
510111						N 76°44'02" E	18.500			
510112						N 14°03'38" W	36.000			
510113						N 43°47'36" W	41.870			
510114						N 13°15'44" W	11.500			
510115						N 76°44'16" E	17.500			
510116						S 13°15'44" E	18.000			
51011										

FIGURE 51010 AREA = 6344.52 SQ. FT. (0.146 ACRES).
DEED RECORD OF ACQUISITION:



Plans are for bidding purposes only and are not intended for construction.

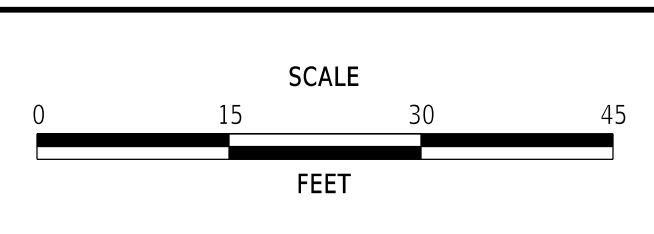
NOTES:
1. NO MORE THAN TWELVE (12) PARKING SPACES ARE ALLOWED TO BE TEMPORARILY IMPACTED DURING THE DURATION OF CONSTRUCTION AT ONE TIME.

LEGEND		
RW	AREA OF ACQUISITION	RW/PE RIGHT-OF-WAY BY PE
PE	PERMANENT EASEMENT	* " - " OFFSET IS LEFT OF BASELINE
TCE	TEMPORARY CONSTRUCTION EASEMENT	** " - " CURVE TURNS TO THE LEFT

2/26/2026 11:33:10 AM W:\PROJECTS\19056.0002\Highways\Cadd\W0#8 [2025]R\W01.dgn



ADDENDA / REVISIONS



PEDESTRIAN ACCESS ROUTES AND SIDEWALK IMPROVEMENTS, NEW CASTLE COUNTY FY25-FY27

CONTRACT	BRIDGE NO.	N/A
T202501101.02	DESIGNED BY:	S. NICKEL
COUNTY	CHECKED BY:	C. YUSYPCHUK
NEW CASTLE		

WORK ORDER #8 ACQUISITION PLAT

SECTION	WM
SHEET NO.	11